



BI-FOLD DOOR ORDER FORM

DATE
ORDER #
CONTACT
PHONE #
TOTAL \$

COMPANY NAME
SHIPPING ADDRESS
CITY STATE ZIP

SELECT CONFIGURATION

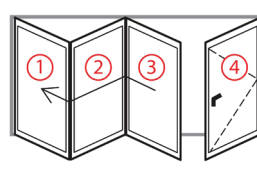
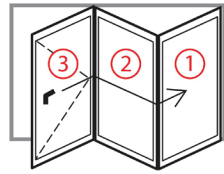
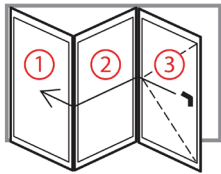


Denotes external access door

W-9: 3L Opening

W-9: 3R Opening

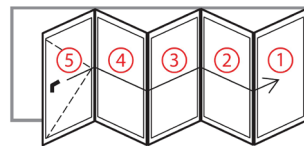
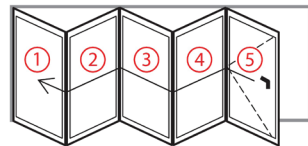
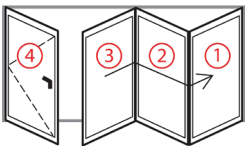
W-12: 3L+1R Opening



W-12: 1L+3R Opening

W-16: 5L Opening

W-16: 5R Opening



Wood Species: Engineered Accoya

Swing: Outswing Only

Door Thickness: 2 1/4"

Glass: 1" Clear Tempered IG Low E

Threshold: Bronze Anodized Aluminium

Lock System: GU Ferco 5-Pt Multipoint

Brickmould & Interior Casing: N/A

W-9 Frame Size: 106 3/4" x 98 3/4"

W-9 Rough Opening: 108 1/4" x 99 1/2"

W-12 Frame Size: 141 3/8" x 98 3/4"

W-12 Rough Opening: 142 7/8" x 99 1/2"

W-16 Frame Size: 187 1/2" x 98 3/4"

W-16 Rough Opening: 189" x 99 1/2"

PRE-FINISH (Standard Options)

Ebony

Unfinished*

Cinnamon

JAMB SIZE (Unfinished Accoya)

5 7/8"

6 9/16"

HANDLESET (Allegro Contemporary Lever Set)

Satin Nickel

Black

HARDWARE (Stainless Steel Finishes)

Stainless Steel

Oil Rubbed Bronze

NOTES & SPECIAL INSTRUCTIONS

*Accoya's acetylation process can result in a discoloration on the surface of the wood, which fades with UV exposure or is easily covered by opaque stain.

SHIPPING PREFERENCE

Required to ship in Partially Assembled Format (additional shipping costs will apply)

All Bi-Folds are factory assembled before shipping. Where possible, the units are delivered partially assembled. In some cases, assembled delivery is not readily available and the units are disassembled before shipping. If you require the unit to be delivered partially assembled, please notate above.

CUSTOMER SIGNATURE TO PROCEED (Unsigned orders cannot be accepted)

SIGNATURE

DATE



Sales@DSADoors.com
10681 World Trade Blvd
Raleigh, NC 27617
www.DSADoors.com
(919) 781-3200